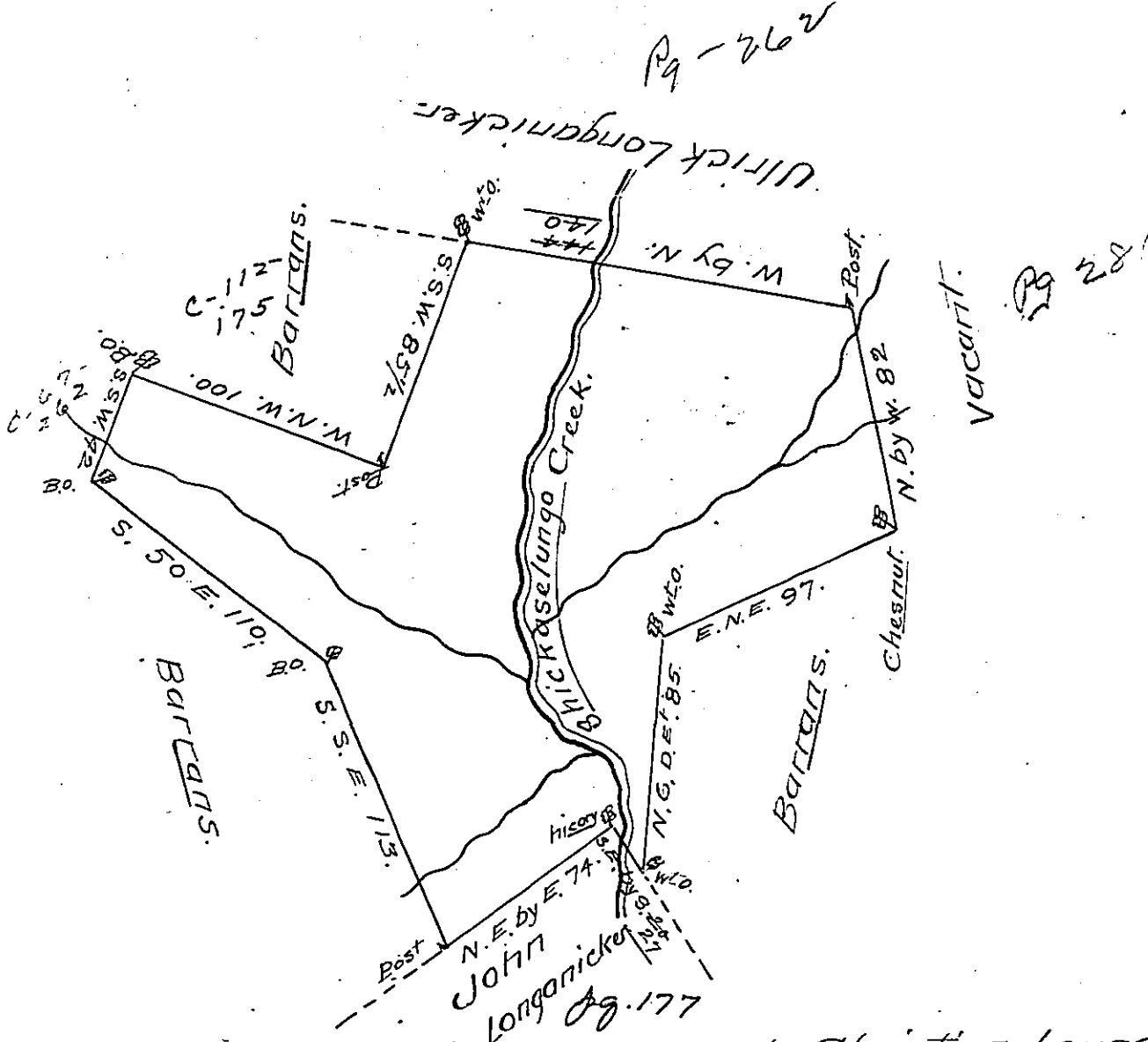


FORM No. 1.



By Order of the Proprietarys surveyed to Christian Longanicker a Tract of Land scituate in the Townships of Donegal & Warwick Beginning at a marked white oak in the Line of John Longanickers Land North 6 deg. East 85 per. To a White Oak thence East North East 97 per. To a Chesnut thence North by west 82 per. To a post thence west by North ~~144~~<sup>140</sup> per. To a white Oak thence South South west 85 per. & 1/2 To a post thence west North west 100 per. To a Black Oak thence South South East 42 per. To a Black Oak thence South 50 deg. East 110 per. To a Black Oak thence South South East 113 per. To a post thence North East by East 74 per. To a hicory thence South East by South 20 perches to the place of Beginning Containing Two Hundred & ~~Twenty~~<sup>sixteen</sup> acres and the usual allowance of six Per Cent. Surveyed the 19<sup>th</sup> Day of March 1735/6  
By S. G. Blunston

IN TESTIMONY that the above is a copy of the original remaining on file in the Department of Internal Affairs of Pennsylvania, made conformably to an Act of Assembly approved the 16th day of February, 1833, I have hereunto set my Hand and caused the Seal of said Department to be affixed at Harrisburg, this twenty fifth day of July 1905.

*George B. Brown*  
Secretary of Internal Affairs.